



The Gnatwork

Intended use of resource / data

Open access resources and data provided by The Gnatwork should be used for the intended purpose only, as specified below.

Title of resource
GN_04: Key characteristics of Phlebotomine sandflies
Authored by
Emma L A Howson, Mary M Cameron
DOI
10.13140/RG.2.2.14879.41129
Description
Distinguishing the subfamily Phlebotominae. Protocol from the Gnatwork Bangladesh workshop, September 3-6 th 2018.
Intended use
Scientific research use and training purposes.
Restrictions on use
Content is not to be redistributed in the public domain (e.g. presentation, lecture, online or in publications).
Resource history
N/A

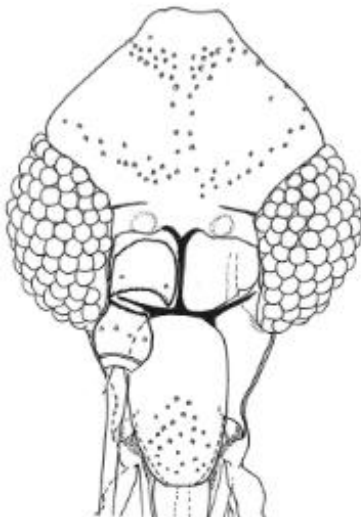


GN_04: Key characteristics of Phlebotomine sandflies

Distinguishing the subfamily Phlebotominae

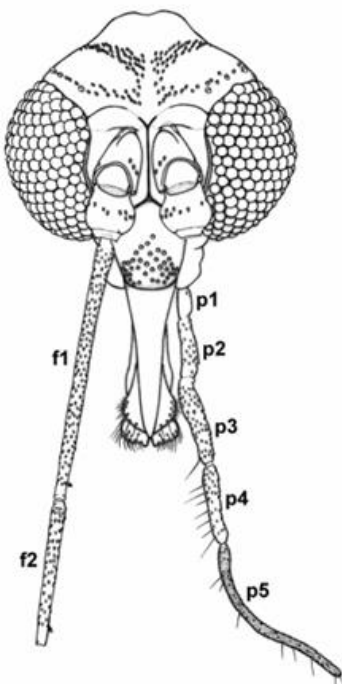
The Phlebotominae are a subfamily of the family Psychodidae, they have the following characteristics:

1. Phlebotominae have the absence of an eye bridge (eyes are separated).



Sandfly (*Lutzomyia tejada*) with separated eyes.
Source: Galati *et al.* (2017).

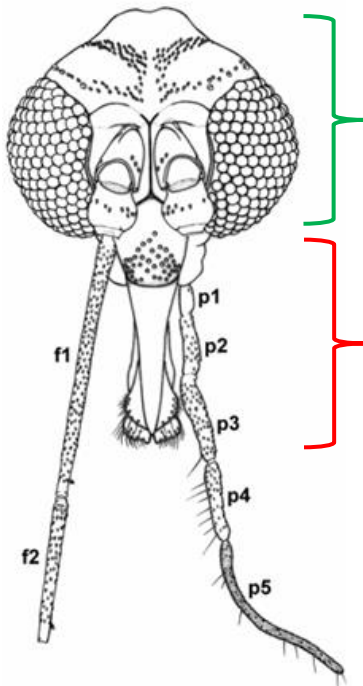
2. Phlebotominae have five-segmented palps



Sandfly (*Lutzomyia olmeca nociva*) with five-segmented palps
Source: Curler (2011)

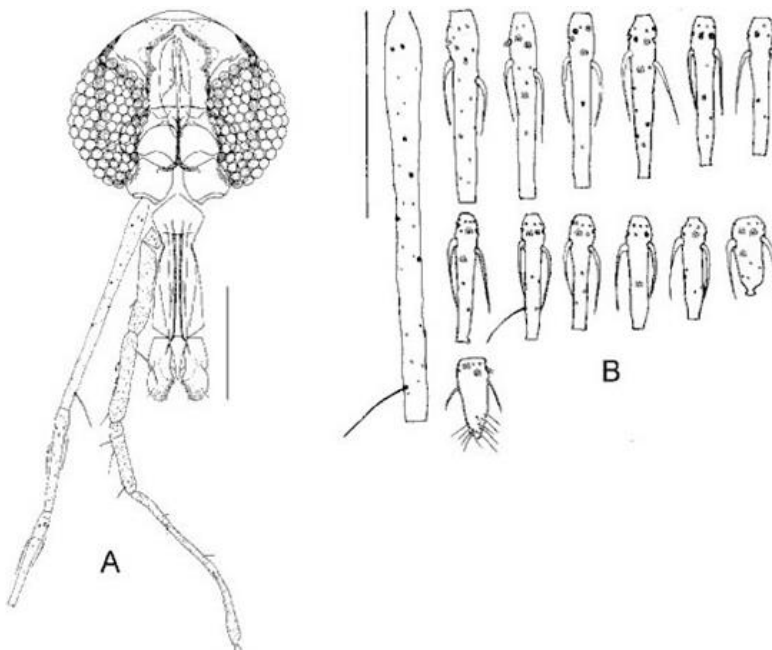


3. The mouthparts of Phlebotominae are at least as long as the head



Sandfly (*Lutzomyia olmeca nociva*). Mouthparts (red) are at least as long as the head (green).
Source: Curler (2011)

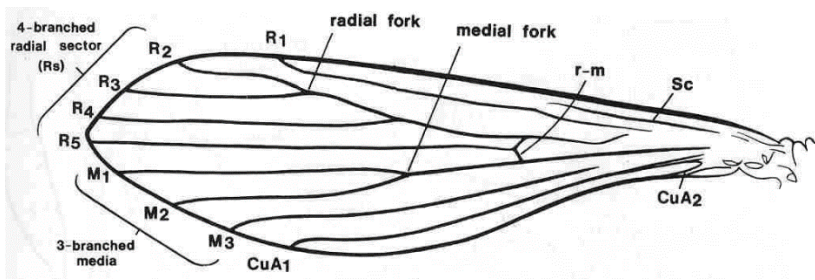
4. The antennal segments of Phlebotominae are almost cylindrical



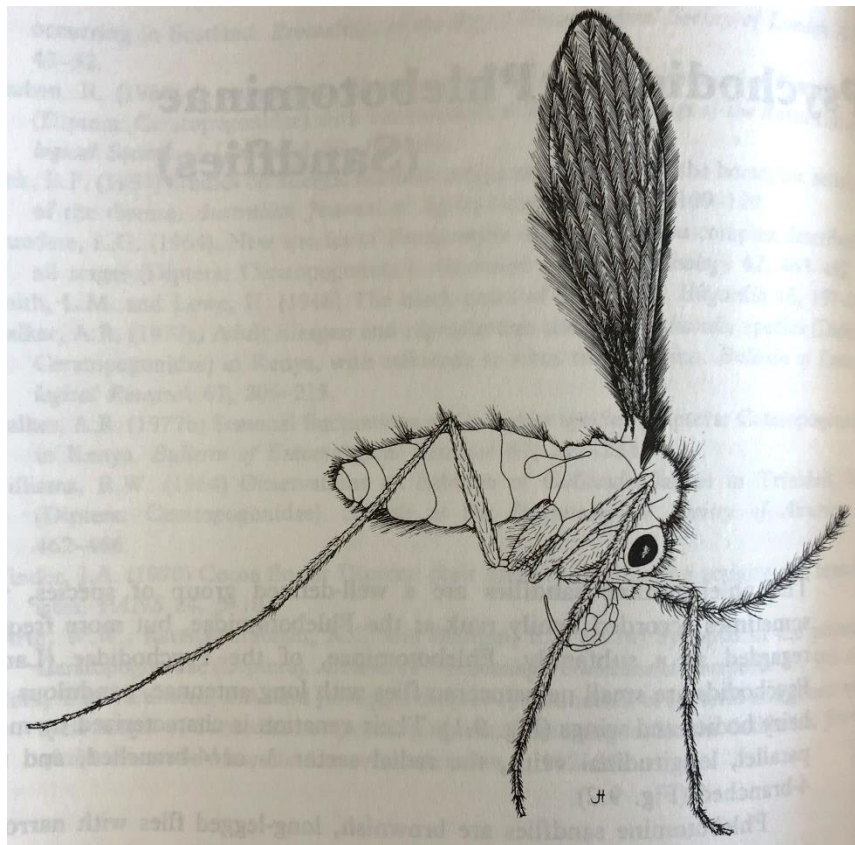
Sandfly (*Lutzomyia falqueto*). A: head. Bar: 0.2mm; B: antenna segments.
Source: Curler (2011)



5. Phlebotominae have five-branched radial veins on their wings.



Sandfly wing with five-branched radial veins: R1-R5
Source: Lane & Crosskey (1993)



Lateral view of a female Phlebotomus.
Source: Kettle (1995)